

Fuel poverty

Winter walk



THE
MUSLIM
NETWORK
COLLABORATION



Public Health
England



Improvement



Department
of Health

Fuel poverty¹ is at crisis levels and now affects 4.5 million UK households. Across the UK, around 4 million households live in fuel poverty. 2,700 people die each year from cold homes. It also impacts:

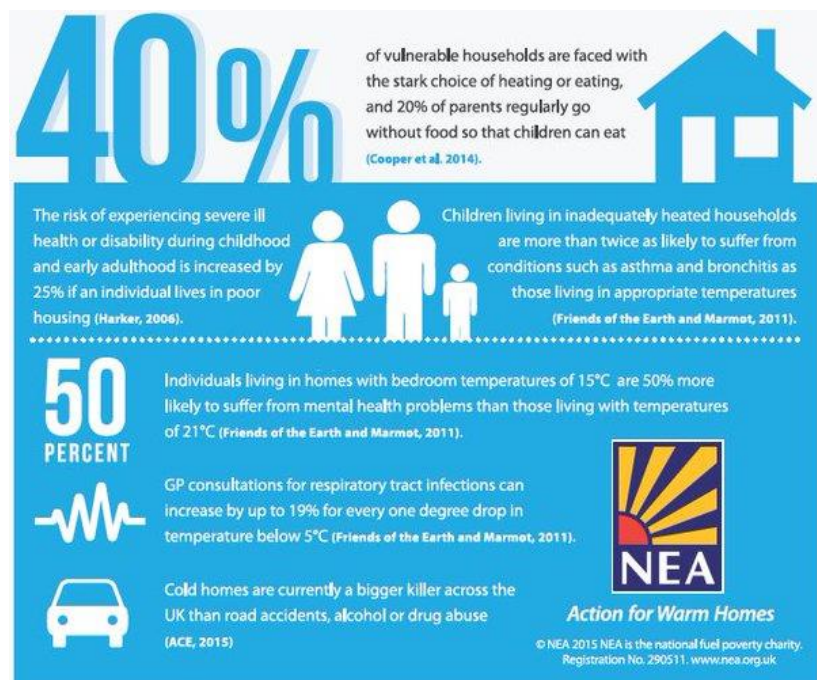
1. **Health Problems** - psychological stress, worry and social isolation, to causing or exacerbating serious illness such as respiratory and circulatory conditions. Over the next 15 years, it is predicted that over 125,000 premature deaths will occur as a result of people living in cold homes throughout the UK.
2. **Suffering during Childhood** - Statistics show that children living in inadequately heated households are more than twice as likely to suffer from conditions such as asthma and bronchitis as those living in appropriate temperatures (Friends of the Earth and Marmot, 2011).
3. **Heat or Eat?** Those in fuel poverty often have to face the stark choice between spending what they need to heat their home adequately and falling into debt; or rationing their energy use and living in cold damp homes that are dangerous to their health. Others spend money on fuel and reduce their purchasing of other necessities, such as food.

National Energy Action

seek to end fuel poverty, working in partnership with central and local government, fuel utilities, housing providers, consumer groups and voluntary organisations.

How can you support?

1. Raise awareness of NEA's work and become a friend of NEA.
2. On Friday February 23, 2018 NEA invites you to take part in The Nation's Biggest Housewarming. Find out more on the NEA website



3. Donate at <https://mydonate.bt.com/fundraisers/winterwalk>

¹ Under the Low Income High Costs definition, a household is considered to be fuel poor if they have required fuel costs that are above average and, if they were to spend that amount, they would be left with a residual income below the official poverty line.